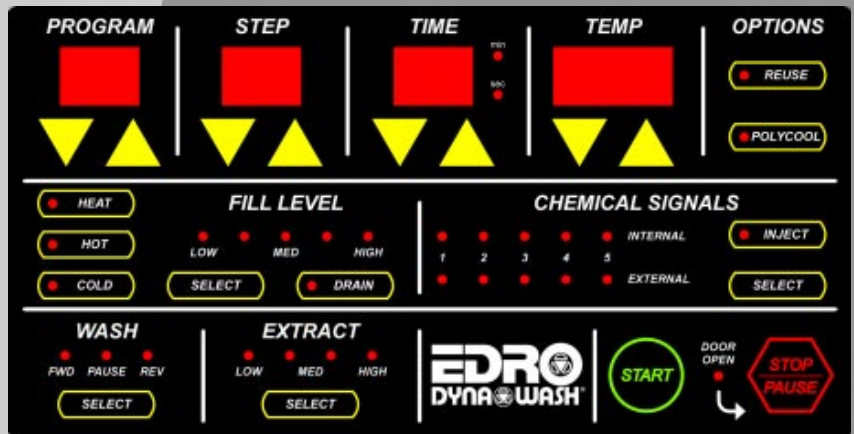




Installation and User's Guide



WashComm Control Programming Software

The Edro Corporation
37 Commerce Street
East Berlin, CT 06023
Voice: (860) 828-0311
Fax: (860) 828-5984
www.edrodynawash.com

Contents

| | |
|--|----------|
| Introduction | 3 |
| <i>What is WashComm?</i> | <i>3</i> |
| Getting Started | 3 |
| <i>System Requirements</i> | <i>3</i> |
| <i>Installing WashComm</i> | <i>3</i> |
| <i>Launching WashComm</i> | <i>3</i> |
| WashComm’s Main Screen | 3 |
| <i>Toolbar</i> | <i>3</i> |
| <i>Programming Bar</i> | <i>3</i> |
| <i>Header Bar</i> | <i>3</i> |
| Using WashComm’s Machine | |
| List View | 4 |
| <i>Machine List</i> | <i>4</i> |
| <i>Changing the Name of a Machine</i> | <i>4</i> |
| <i>Adding a Machine to the Machine List</i> | <i>4</i> |
| <i>Removing a Machine from the List</i> | <i>4</i> |
| <i>Formula Sharing</i> | <i>4</i> |
| <i>Quick Temperatures (Washer Controls Only)</i> | <i>4</i> |
| <i>Entering Information About your Plant</i> | <i>4</i> |
| Using WashComm’s | |
| Wash Program List View | 5 |
| <i>Wash Program List</i> | <i>5</i> |
| <i>Adding a Wash Program</i> | <i>5</i> |
| <i>Removing a Wash Program</i> | <i>5</i> |
| <i>Changing a Wash Program Name</i> | <i>5</i> |
| <i>Returning to the Washer List View</i> | <i>5</i> |
| Using WashComm’s | |
| Step List View | 5 |
| <i>Selecting a Wash Program</i> | <i>5</i> |
| <i>Editing a step</i> | <i>5</i> |
| <i>AutoPrograms</i> | <i>5</i> |
| Using WashComm’s Step Editor | 6 |
| <i>Step Editor Note</i> | <i>6</i> |
| <i>Clearing a Step</i> | <i>6</i> |
| <i>Programming Outputs</i> | <i>6</i> |
| <i>Programming Temperature and Level</i> | <i>6</i> |
| <i>Adding Chemicals</i> | <i>6</i> |
| <i>Removing a Chemical Injection</i> | <i>6</i> |
| <i>Adding a Custom Step Name</i> | <i>6</i> |
| <i>Programming Step Time</i> | <i>6</i> |
| Using WashComm to Program Controls | |
| With a WashComm Cable | 6 |
| <i>Setting up WashComm to use a WashComm Cable</i> | <i>6</i> |
| <i>WashComm Cable</i> | <i>7</i> |
| <i>Sending wash programs to a washer</i> | <i>7</i> |
| <i>Uploading wash programs from a washer to a computer</i> | <i>7</i> |

Introduction

What is WashComm?

WashComm is a software package designed to make programming and configuring Edro washer extractor controls quick, easy, and convenient. Instead of programming each control from the machine's front panel, you can set up your wash formulas on a portable computer and download them directly to your washer controls using the WashComm cable.

Getting Started

System Requirements

To install WashComm, you will need a portable or desktop computer that meets the following requirements:

- 486 (or better) processor
- 32 (or more) megabytes of RAM
- 3 free megabytes of hard drive space
- Microsoft Windows 95, 98, ME, 2000, XP or NT
- Mouse, trackball, or trackpad recommended

Installing WashComm

Insert the installation disk into drive 'A.' Go to the Start menu and select "Run...". When asked for the name of a program, folder, or document, type "a:\setup" and press [RETURN]. This will launch the WashComm installer, which will perform the rest of the installation process. The installer will automatically add a "WashComm" item to your start menu in the "Programs" section.

Launching WashComm

From the Start menu, choose the "Programs" folder, then the "WashComm" folder, and finally select the "WashComm" item in the "WashComm" folder.

WashComm's Main Screen

Toolbar

The toolbar gives you quick access to commonly used features of WashComm, like saving a file, printing a file, cut, copy, paste, adding an end step, inserting or deleting a step, or adding steps from an AutoProgram.

Toolbar

Programming Bar

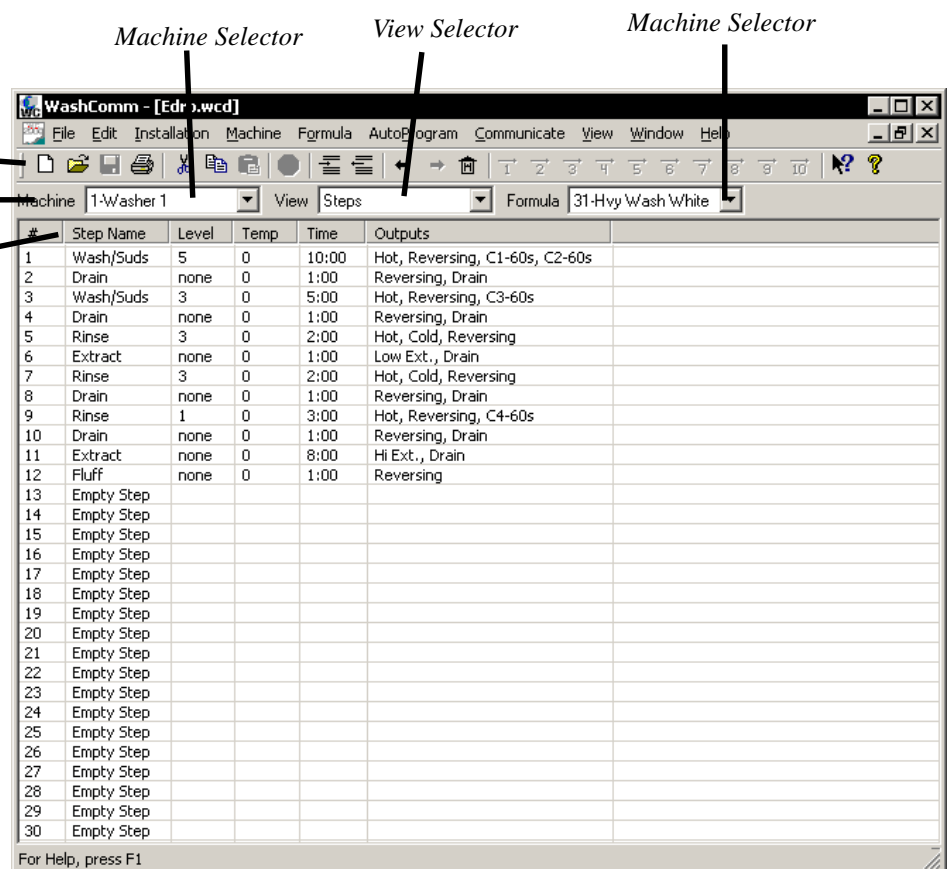
Header Bar

Programming Bar

The programming bar allows you to quickly and conveniently switch between different washers, formulas, or views. It contains a Washer selector, which lists all of the washers currently set up in WashComm, a View selector, which lets you quickly change between Formula, Step, I/O Assignment, Multi I/O Assignment, Option, Supply Calibration and Supply I/O Assignment views, and a Formula selector, which lets you quickly access any of a washer's formulas.

Header Bar

The header bar provides column headings for the information displayed in the main screen.



Using WashComm's Machine List View

Machine List

When you first start WashComm, it will display a list of the machines set up in the file. If this is the first time you've launched WashComm, there will be a single washer listed, called "New Washer."

Changing the Name of a Machine

To change the name of a machine, first highlight it in the machine list. Then go to the "Installation" menu and choose "Edit Machine Information...". This will bring up a dialog box that will allow you to modify the machine's name (as it will appear in the list). From the Edit Machine Information dialog you can also enter a longer machine description (machine serial number, control type, etc.), enable Formula Sharing, enter the control software version and set up Quick Temperatures. Formula Sharing and Quick Temperatures are explained in separate sections.

Adding a Machine to the Machine List

To add a machine to the list, go to the "Installation" menu and select "Add Machine...".

Removing a Machine from the List

To remove a machine from the machine list, highlight the machine you want to remove. Then go to the "Installation" menu and choose "Remove Machine."

Formula Sharing

If you have a number of machines with identical formulas, you can use Formula Sharing to automatically update the formulas in all of those machines when you change one. When you set up Formula Sharing, you must designate one machine as a "formula master." Any changes made to the formula master's formulas will be reflected in the slave machines' formulas.

To set up Formula Sharing, highlight the machine you want to be the "slave" machine and choose "Edit Machine Information..." from the "Installation" menu. In the "Formula Sharing" section of the Edit Machine Information dialog box, select the machine you want to act as formula master from the dropdown box.

For example, if you want washer 2 to get its formulas from washer 1, make washer 1 the formula master for washer two by selecting washer 1 in the Formula Master dropdown box for washer 2.

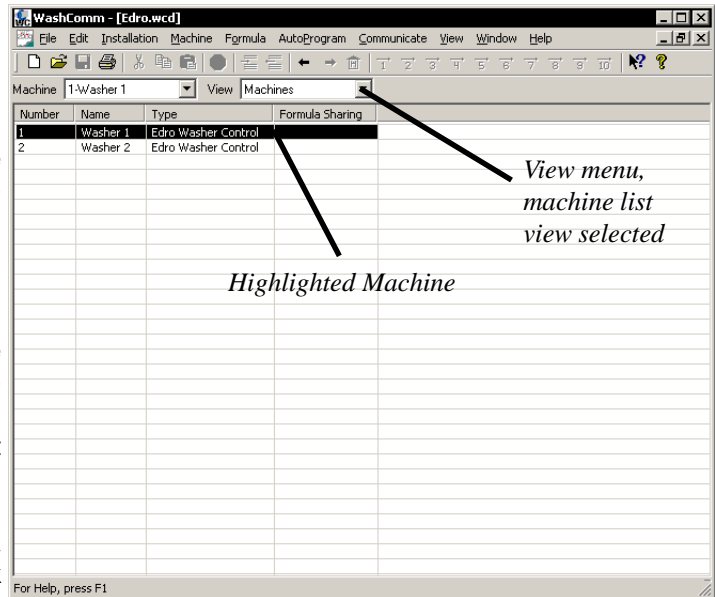
Quick Temperatures (Washer Controls Only)

Quick Temperatures allow you to preset temperatures in the formula editor. Usually, these will be set to the low, medium, and high settings recommended by Edro.

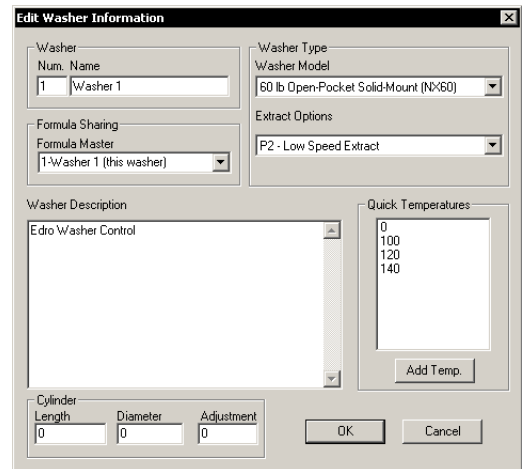
To add a quick temperature, highlight the washer you want to add the temperature to and select "Edit Machine Information..." from the "Installation" menu. In the Edit Machine Information dialog box, click the button marked "Add Temp." WashComm will ask you what temperature you want to add.

Entering Information About your Plant

WashComm puts your plant name on all formula and setup printouts. To enter your plant name and address, select "Edit Installation Information" from the "Installation" menu.



Machine List View



Edit Machine Information Screen

Using WashComm's Wash Program List View

Wash Program List

The wash program list displays the names of the wash programs stored for each control. You can get to the wash program list by double-clicking on a machine in the machine list view, or by choosing "Wash Programs" from the view selector.

Adding a Wash Program

To add a wash program, highlight the wash program in the list that you want the new program you're inserting to come before. Choose "Insert" from the "Edit" menu, type [CONTROL]-I on the keyboard, or click the "insert step or formula" button on the toolbar.

NOTE: If you insert a wash program into the formula list, it will move the higher-numbered wash programs down and destroy the last wash program in the list.

Removing a Wash Program

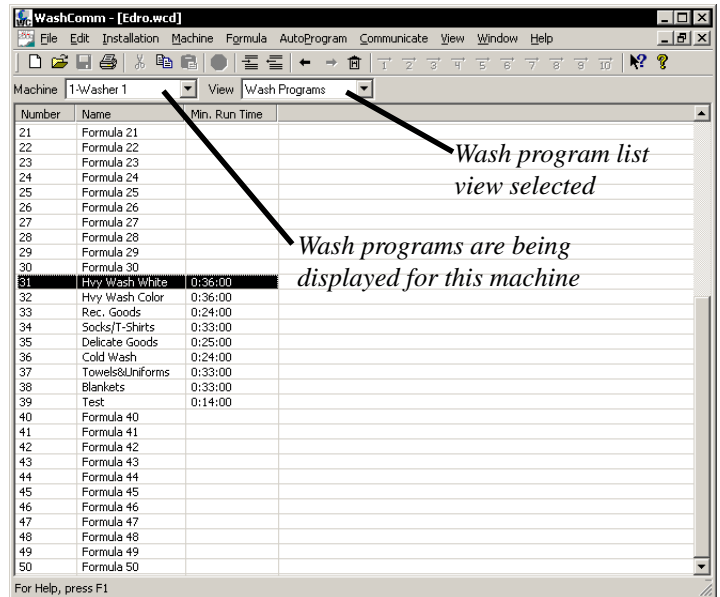
To remove a wash program, highlight the wash program that you want to delete, and choose "Delete" from the "Edit" menu, type [CONTROL]-D on the keyboard, or click the "delete step or formula" button on the toolbar. WashComm will allow you to delete a program and move the other programs on the list up or to insert a blank program in place of the one you want to delete.

Changing a Wash Program Name

To change the name of a wash program, select the program in the list and choose "Change formula name..." from the "Formula" menu.

Returning to the Washer List View

You can return to the machine list view from the formula list view by choosing "Machines" from the view selector, or by clicking the "back" button on the toolbar.



Wash Program List View

Using WashComm's Step List View

Selecting a Wash Program

You can select a different wash program any time you're in the step list view using the formula selector.

Editing a step

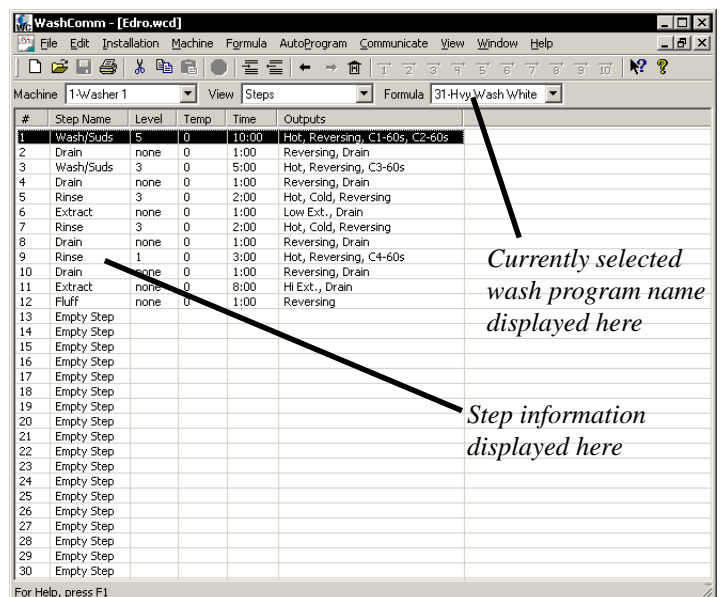
To edit a step, highlight the step you wish to edit and double-click it or press [RETURN].

AutoPrograms

AutoPrograms let you store a frequently-used sequence of steps and quickly insert them into a formula. WashComm allows you to set up as many as ten AutoPrograms.

To assign steps to an AutoProgram, control-click or shift-click on the steps you want to reuse. Then select "Assign Steps to AutoProgram" from the "AutoProgram" menu. WashComm will ask you to assign a name to the AutoProgram, and will display that name in the AutoProgram menu.

To use an AutoProgram, simply click on the toolbar button for the AutoProgram you wish to use (T through 10), or select the AutoProgram you want from the AutoProgram menu.



Step List View

Using WashComm's Step Editor

Step Editor Note

The Step Editor in WashComm is designed to operate similarly to the program mode on Edro washer controls. If you are familiar with programming Edro washer controls, you should have little difficulty programming formulas in WashComm.

WashComm's Step Editor

Clearing a Step

If you want to clear a programmed step, press the "clear" button on the step editor.

Programming Outputs

To program outputs, click on the checkbox next to the output you want to turn on or off.

Programming Temperature and Level

You can program temperature either by using the "quick" temperature list, or by typing the desired amount into the temperature box. To program level, click on the box corresponding to the desired level.

Adding Chemicals

Enter the number of seconds you want the chemical output to be active in the box corresponding to the chemical you wish to add.

Removing a Chemical Injection

To remove a chemical, enter zero in the box corresponding to the chemical you wish to remove.

Adding a Custom Step Name

If you do not like the step name that is automatically selected when you program outputs for the step, type in the step name you want in the step name box.

Programming Step Time

To program the step time, select minutes or seconds, then enter the time.

Using WashComm to Program Controls With a WashComm Cable

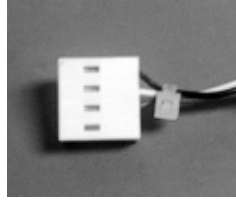
Setting up WashComm to use a WashComm Cable

Before you can use WashComm to download information to a control, you must first give WashComm some information about your serial port connections.

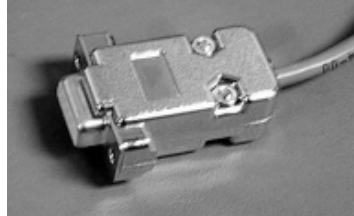
To set up WashComm to work with a WashComm cable, select "Serial Port Setup..." from the "Communicate" menu. This will bring up the Select Serial Port screen.

Select the COM port (serial port) that the WashComm Cable will be connected to.

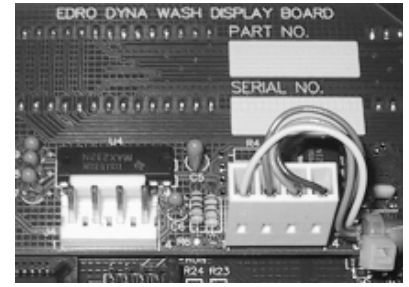
Select Serial Port Screen



4 Pin Plug



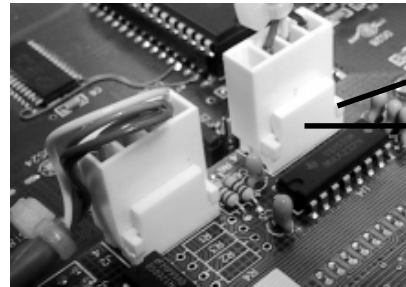
9 Pin Plug



4 Pin Jack on Display Board

WashComm Cable

The WashComm cable has a silver 9-pin plug at one end, and a white four pin plug at the other. The 9-pin plug should be connected to the serial port on the computer to be used for downloading. The white connector should be connected to the 4 pin jack on the display board of the washer control.



Tab on 4 Pin Plug

Tab on 4 Pin Jack on Board

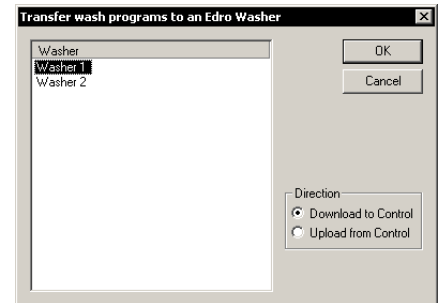
Correct orientation of connectors

Sending wash programs to a washer

Before you can download wash programs to a control, verify that your WashComm Cable settings are correct, then connect the WashComm Cable to your computer and to the control.

Once the cable is connected, select "Edro Washer Control..." from the "Communicate" menu. This will bring up the Transfer Wash Programs screen. Select the washer you are working with from the list, and click "download to control".

On the control, put the key switch in the "Program" position, then press the "Program Up" and "Program Down" buttons simultaneously to enter edit mode. Press "Program Up" and "Program Down" simultaneously again to access the advanced features menu. Use the "Program Up" button to select "Get Pro", then press the "Start" button to start the receive process.



Transfer Wash Programs Screen

On the computer, click the "OK" button to start sending the wash programs.

Uploading wash programs from a washer to a computer

Before you can upload wash programs from a control, verify that your WashComm Cable settings are correct, then connect the WashComm Cable to your computer and to the control.

Once the cable is connected, select "Edro Washer Control..." from the "Communicate" menu. This will bring up the Transfer Wash Programs screen. Select the washer you are working with from the list, and click "upload from control". Then click "OK" to start the receiving process.

On the control, put the key switch in the "Program" position, then press the "Program Up" and "Program Down" buttons simultaneously to enter edit mode. Press "Program Up" and "Program Down" simultaneously again to access the advanced features menu. Use the "Program Up" button to select "Send Pro", then press the "Start" button to start the sending process.