



PARTS REFERENCE MANUAL

OPEN POCKET SOFT MOUNT TILTING WASHER-EXTRACTORS



CSL350

The EDRO Corporation

37 Commerce Street - P.O. Box 308 – East Berlin, CT 06023-0308 USA

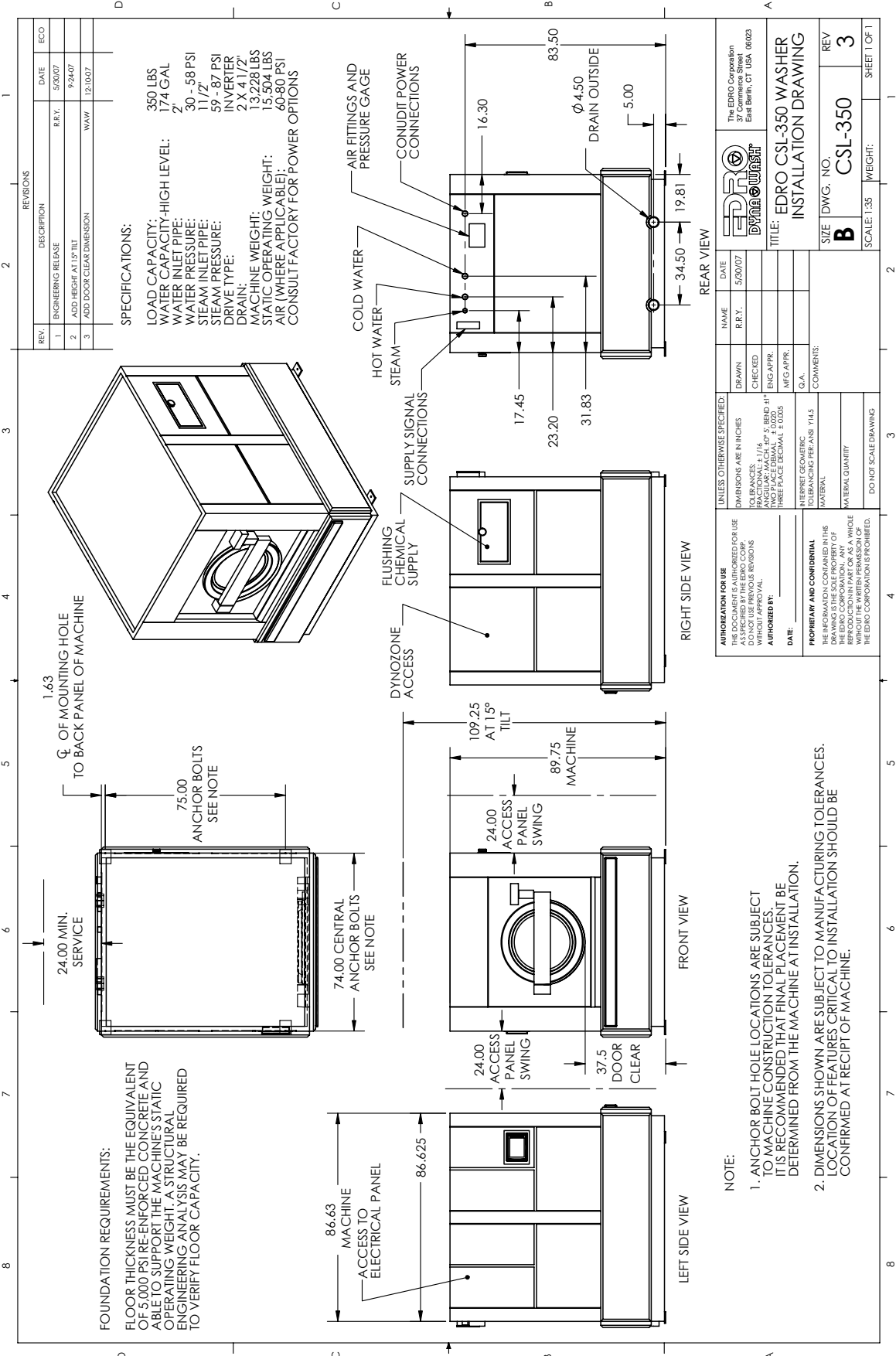
Tel. (860) 828-0311 • Fax (860) 828-5984

Website: <http://www.edrodynawash.com>

Email: service@edrodynawash.com

Technical information described herein is based on standard machine descriptions. A standard machine has 220V/3Ø/60Hz electrical and fitted with DynOzone. Parts listings, quantities, parts placement and illustrations may be different for non-standard machinery. Consult EDRO technical support for parts listings for non-standard machinery.

INSTALLATION DRAWING



MACHINE FRAME ASSEMBLY

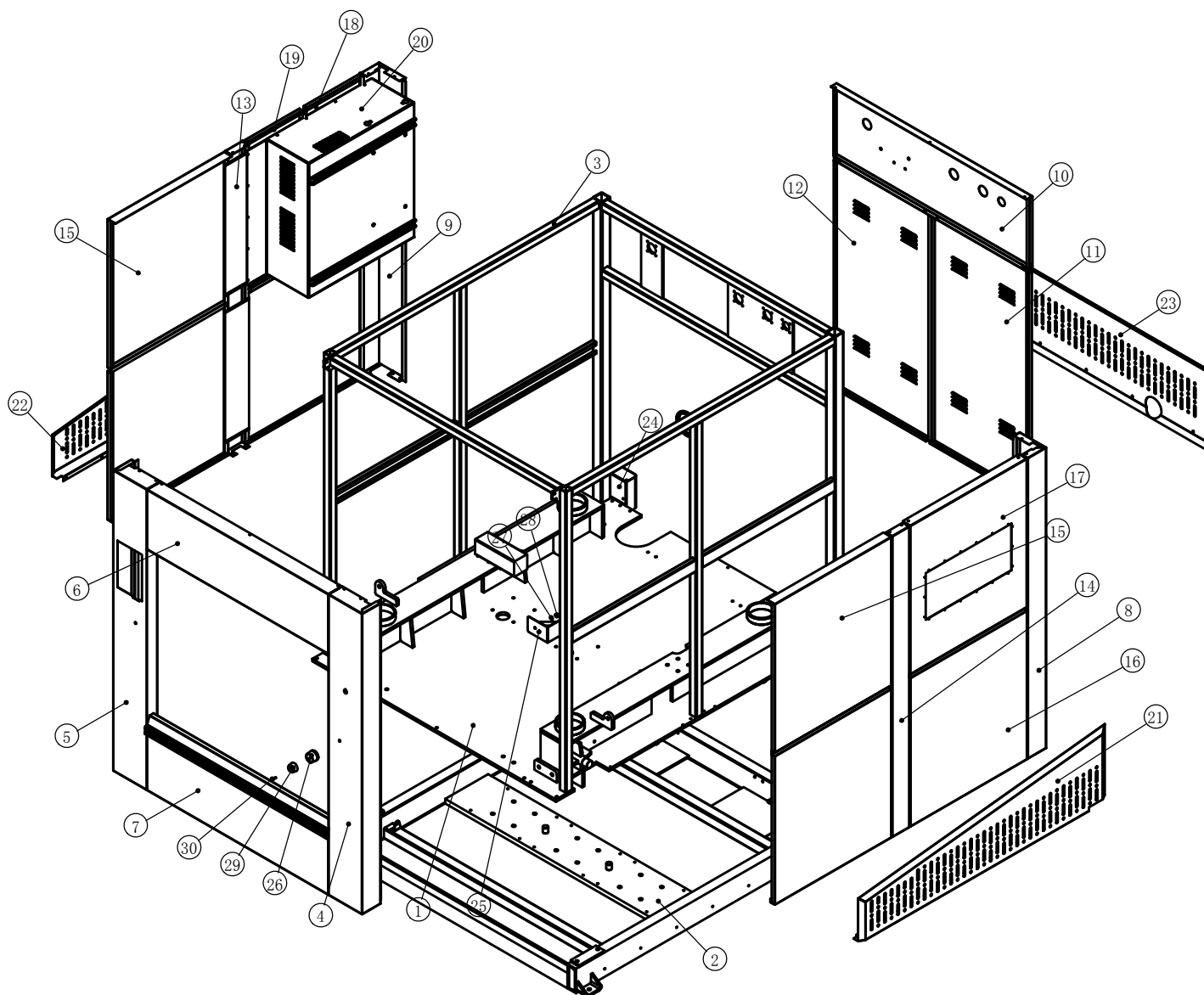
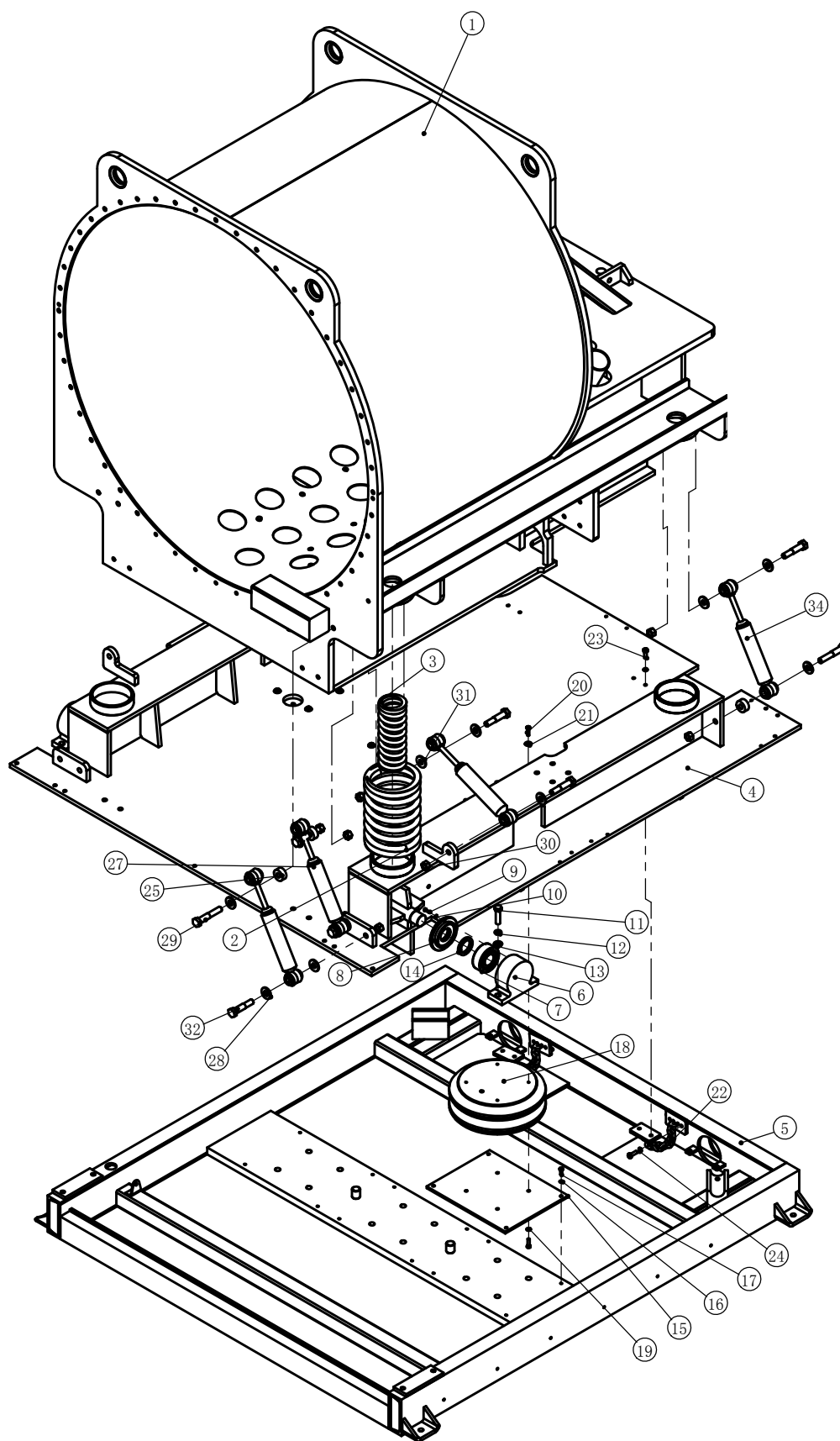


Figure	Part No.	Description	Qty
1	CSL-8161010500	Base, Frame	1
2	CSL-8161010100	Base	1
3	CSL-8161020900	Frame	1
4	CSL-8161020100	Front Right Panel	1
5	CSL-8161020400	Front Left Panel	1
6	CSL-81610202	Front Top Panel	1
7	CSL-8161020300	Front Bottom Panel	1
8	CSL-81610215	Back Left Panel	1
9	CSL-81610228	Back Right Panel	1
10	CSL-81610217	Back Top Panel	1
11	CSL-81610216	Back Panel Right	1
12	CSL-81610218	Back Panel Left	1

MACHINE FRAME ASSEMBLY - CONTINUED

Figure	Part No.	Description	Qty
13	CSL-8161021200	Side Panel, Left Center	1
14	CSL-8161022000	Side Panel, Right Center	1
15	CSL-81610213	Side Panel, Right Front	2
16	CSL-81610221	Side Panel, Bottom	4
17	CSL-81610222	Side Panel, Supply	1
18	CSL-81610210	Door, Control Box Left	1
19	CSL-81610211	Door, Control Box Right	1
20	CSL-8161020800	Control Box	1
21	CSL-816110223	Guard, Right Side	1
22	CSL-81610230	Guard, Left Side	1
23	CSL-81610225	Guard, Rear	1
24	CSL-8171050500	Box, Power Input	1
25	CSL-81610234	Bracket	1
26	CSL-51610235	Bumper Seat	1
27	CSL-30305006	Lock Washer 10	1
28	CSL-30303006	Nut M10	1
29	CSL-4011710819	Bumper	1
30	CSL-30309117	Bolt M6X25	1
31	CSL-31001013	V-Ring	1
32	CSL-30901015	Cylinder	1

MACHINE BASE ASSEMBLY



8161010500	Base
8161010100	Base
510070068	
30203019	Bearing
510070067	
30302034	Screw M8X20
30305004	Lock Washer 6
30302157	Screw M16X60
30305009	Lock washer 16
30304010	Washer 16
820090407	Sealing ring
81710509	
30305005	Lockwasher 8
30302053	Screw M8X20
30908001	Air spring
30304006	Washer 8
30302056	Screw M8X30
30306004	Washer 8
8161010300	Chain
30502032	Screw M10X30
30305006	Lock washer 10
51610104	Washer
31901101	Buffer
51710707	Washer
51610109	Screw
30303010	Nut M18
51710706	Washer
51610109	Screw
31001013	V-ring
31901101	Buffer
30901015	Cylinder

MACHINE BASE ASSEMBLY - CONTINUED

Figure	Part No.	Description	Qty
1	CSL-916173	Shell	1
2	CSL-4021411004	Spring	4
3	CSL-4021610110	Spring	4
4	CSL-8161010500	Base, Frame	1
5	CSL-8161010100	Base	1
6	CSL-510070068	Bearing Housing	2
7	CSL-30203019	Bearing	2
8	CSL-510070067	Bearing House Cover	2
9	CSL-30302034	Screw M6X20	5
10	CSL-30305004	Lock Washer 6	5
11	CSL-30302157	Screw M16X60	4
12	CSL-30305009	Lock Washer 16	4
13	CSL-30304010	Washer 16	4
14	CSL-820090407	Sealing Ring	2
15	CSL-81710509	Air Spring Bracket	3
16	CSL-30305005	Lock Washer 8	12
17	CSL-30302053	Screw M8X20	12
18	CSL-30908001	Air Spring	3
19	CSL-30304006	Washer 8	12
20	CSL-30302056	Screw M8X30	24
21	CSL-30306004	Washer 8	12
22	CSL-8161010300	Chain	2
23	CSL-30502032	Screw M10X30	5
24	CSL-30305006	Lock Washer 10	5
25	CSL-51610104	Washer	6
27	CSL-31901101	Buffer	6
28	CSL-51710707	Washer	16
29	CSL-51610109	Screw	6
30	CSL-30303010	Nut M18	16
31	CSL-517110706	Washer	10
32	CSL-51610109	Screw	10
33*	CSL-31001013	V-Ring	1
34	CSL-31901101	Buffer	2
35	CSL-30901015	Cylinder	1

* ITEM 33 IS NOT SHOWN.

SHELL, CYLINDER AND DRIVE ASSEMBLY

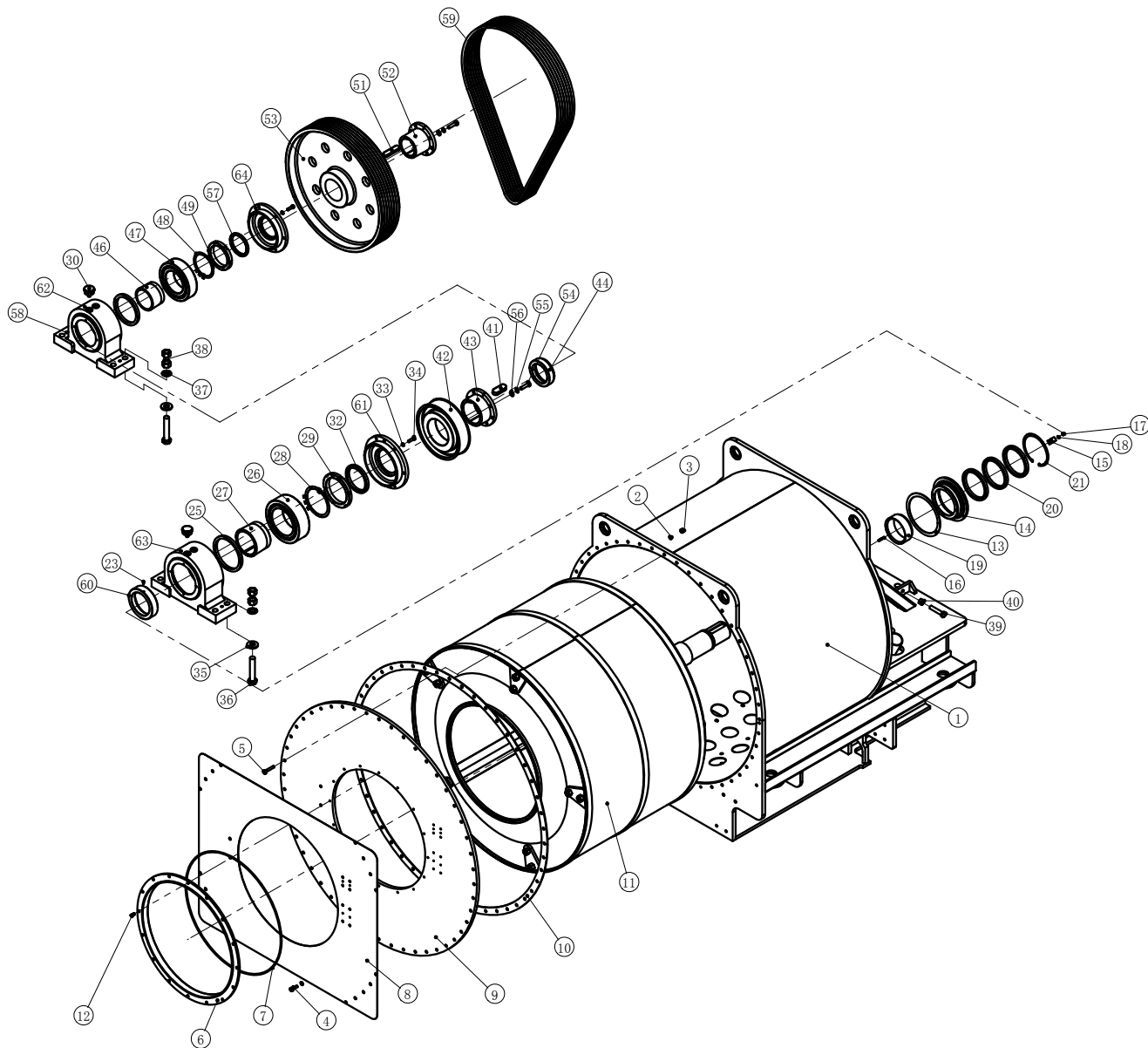


Figure	Part No.	Description	Qty
1	CSL-916173	Shell	1
2	CSL-30305008	Lock Washer 14	48
3	CSL-30303008	Nut M14	41
4	CSL-30502043	Screw M14X40	7
5	CSL-30501045	Screw M14X70	41
6	CSL-5161031300	Door Flange	1
7	CSL-4011300309	Sealing Strip	1
8	CSL-81610314	Front Pane	1
9	CSL-51610310	Front Plate	1
10	CSL-4011500327	Gasket	1
11	CSL-916174	Cylinder	1
12	CSL-30312064	Bolt M8X20	16
13	CSL-4011610515	Gasket	1

SHELL AND DRIVE ASSEMBLY - CONTINUED

Figure	Part No.	Description	Qty
14	CSL-51610516	V-Ring Housing	1
15	CSL-51610518	Clamp Bar	4
16	CSL-30340016	Bolt M8X35	4
17	CSL-30303005	Nut M8	4
18	CSL-30305005	Lock Washer 8	4
19	CSL-4331610514	Spacer	1
20	CSL-31011014	V-Ring	4
21	CSL-30328038	Clamp	1
23	CSL-30313082	Bolt M6X20	1
25	CSL-31001034	V-Ring	1
26	CSL-30203022	Bearing	1
27	CSL-30250003	Bearing Spacer	1
28	--	Stop Washer	1
29	--	Nut	1
30	--	--	2
32	CSL-31001035	V-Ring	1
33	CSL-30305007	Lock Washer 12	12
34	CSL-30302097	Screw M12X40	12
35	CSL-51710204	Washer	8
36	CSL-30301130	Screw M30X160	8
37	CSL-30304018	Washer 30	8
38	CSL-30303018	Nut M30	16
39	CSL-30301098	Screw M20X100	4
40	CSL-30303011	Nut M20	4
41	CSL-30339082	Flat Key	1
42	--		1
43	CSL-51610507	Spacer	1
44	CSL-51610512	Spacer	1
46	--	Spacer	1
47	CSL-30203026	Bearing	1
48	--	Stop Washer	1
49	--	Screw	1
51	CSL-30339081	Flat Key	1
52	CSL-4331610510	Spacer	1
53	CSL-51610508	Pulley	1
54	CSL-30301071	Screw M16X60	8
55	CSL-30305009	Lock Washer 16	8
56	CSL-30304010	Washer 18	8
57	CSL-31001013	V-Ring	1
58	CSL-30324014	Pin	4
59	CSL-31505028	V-Belt	7
60	CSL-51610503	Spacer	1
61	CSL-51610505	Front Bearing Housing Cover	1
62	CSL-51610509	Back Bearing Housing	1
63	CSL-51610504	Front Bearing Housing	1
64	CSL-51610511	Back Bearing Housing Cover	1

MOTOR DRIVE ASSEMBLY

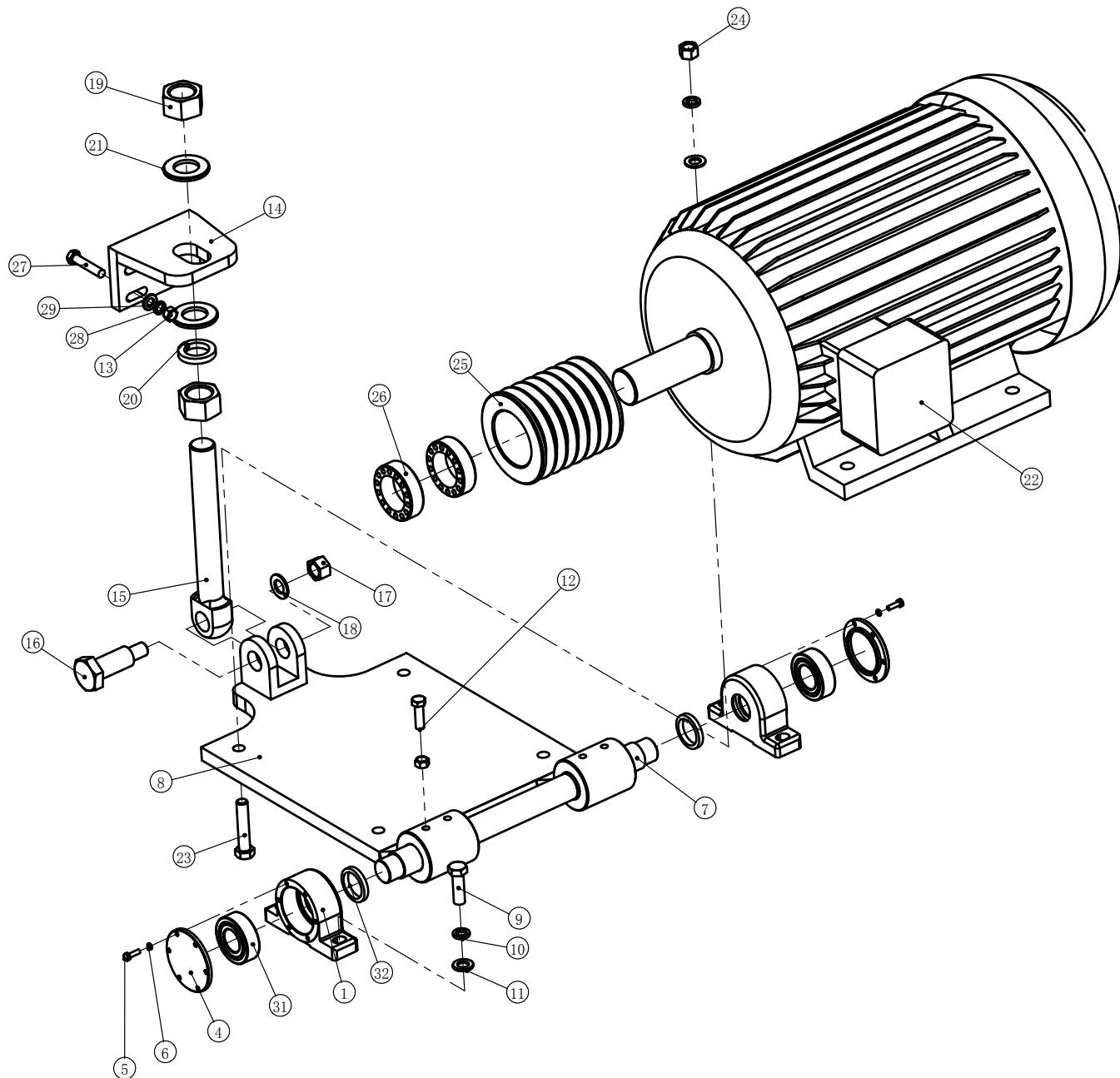
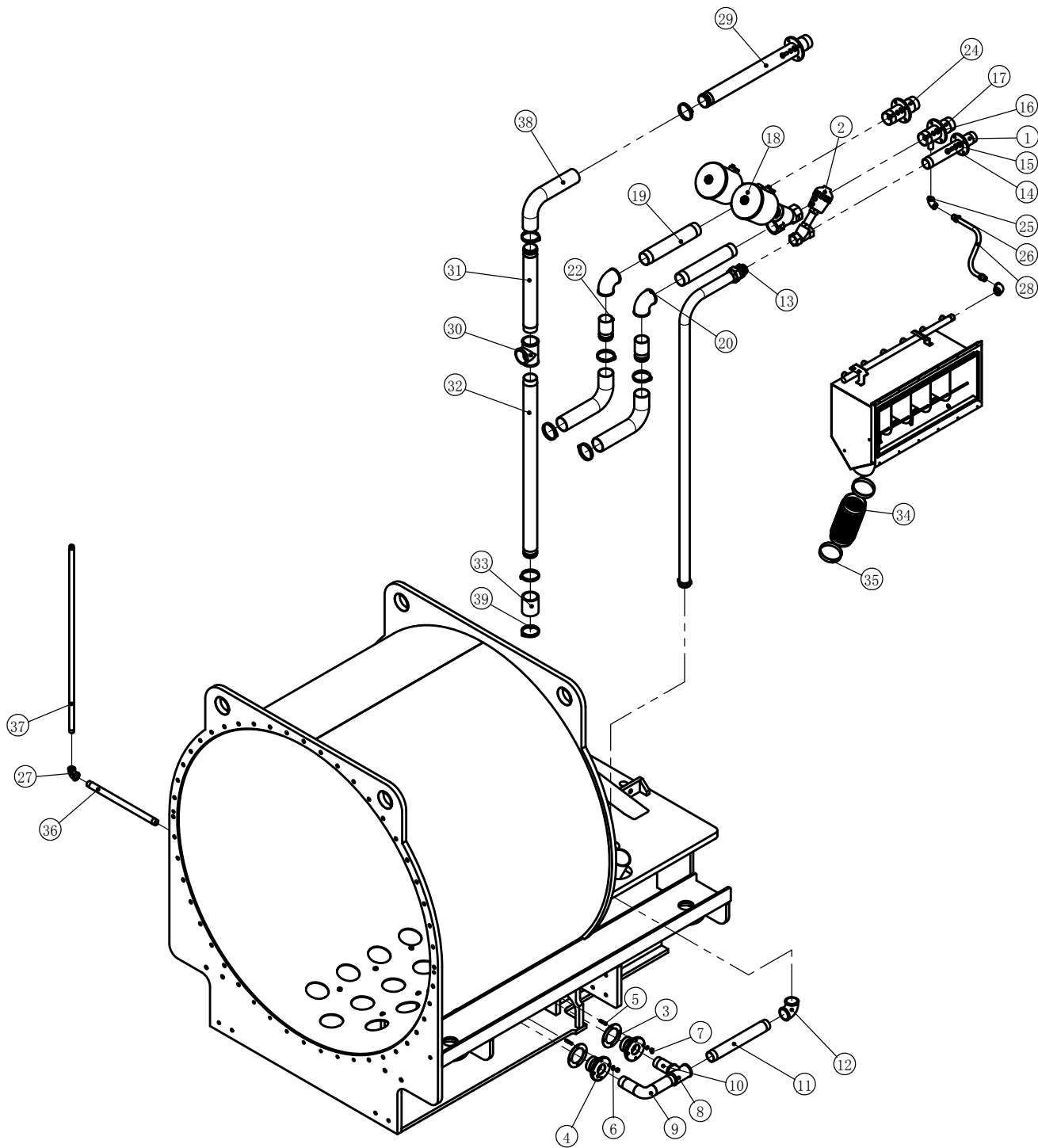


Figure	Part No.	Description	Qty
1	CSL-51710227	Bearing Housing	2
4	CSL-51710229	Bearing Housing Cover	2
5	CSL-30302034	Screw M6X20	12
6	CSL-30305004	Lock Washer 6	12
7	CSL-51610522	Axis	1
8	CSL-8161051900	Motor Mounting Plate	1
9	CSL-30302155	Screw M16X50	4
10	CSL-30305009	Lock Washer 16	8

MOTOR DRIVE ASSEMBLY - CONTINUED

Figure	Part No.	Description	Qty
11	CSL-30304010	Washer 16	8
12	CSL-30302097	Screw M12X40	4
13	CSL-30303007	Nut M12	8
14	CSL-81710222	Bracket	1
15	CSL-51710221	Screw	1
16	CSL-51710220	Pin	1
17	CSL-30303011	Nut M20	1
18	CSL-30304012	Washer 20	1
19	CSL-30303021	Nut M36	2
20	CSL-30305021	Lock Washer 36	1
21	CSL-30304021	Washer 36	2
22	CSL-30102025	Motor	1
23	CSL-30301075	Screw M16X80	4
24	CSL-30303009	Nut M16	4
25	CSL-51610513	Motor Pulley	1
26	CSL-30337017	Expanding Sleeve	2
27	CSL-30301045	Screw M12X60	4
28	CSL-30305007	Lock Washer 12	4
29	CSL-30304008	Washer 12	4
31	CSL-30203001	Bearing	2
32	CSL-31901038	Sealing Ring	2

PLUMBING ASSEMBLY



- Corner valve
- Gasket
- Screw M8X25
- Lockwasher 8
- Nut M8
- T-connect
- Pipe
- Pipe
- Pipe
- Elbow
- Hose
- Screw M10X25
- Lock washer 10
- Washer 10
- Valve
- Pipe
- Pipe
- Elbow
- Pipe
- Clamp
- Elbow
- Tie-in
- Pipe
- T-connect
- Pipe
- Pipe
- Hose
- Ripple pipe
- Clamp
- Pipe

PLUMBING ASSEMBLY - CONTINUED

Figure	Part No.	Description	Qty
1	CSL-8161090500	Inlet, Steam	1
2	CSL-30902054	Steam Valve	1
3	CSL-401151901	Gasket	2
4	CSL-510070054	Steam Diffuser	2
5	CSL-30340058	Scre M8X25	8
6	CSL-30305005	Lock Washer 8	8
7	CSL-30303005	Nut M8	8
8	CSL-31320005	T-Connect	1
9	CSL-51610901	Elbow	1
10	CSL-51610903	Pipe	1
11	CSL-51610904	Pipe	1
12	CSL-31303006	Elbow	1
13	CSL-31711015	Hose	1
14	CSL-30302069	Screw M10X25	16
15	CSL-30305006	Lock Washer 10	16
16	CSL-30304007	Washer 10	16
17	CSL-8161090600	Inlet, Cold Water	1
18	CSL-30902057	Valve	2
19	CSL-51610908	Pipe	2
20	CSL-31303007	Elbow	2
22	CSL-51610910	Pipe	2
24	CSL-8161090700	Inlet, Hot Water	1
25	CSL-31303003	Elbow	1
26	CSL-510010078	Tie-In	2
27	CSL-31305001	Elbow	2
28	CSL-31716002	Pipe	1
29	CSL-8161090900	Overflow Connection Pipe Flange	1
30	CSL-31306008	T-Connect	1
31	CSL-51610912	Pipe	1
32	CSL-51610914	Pipe	1
33	CSL-4012520710	Hose	1
34	CSL-4011610911	Hose, Flexible Drain	1
35	CSL-31901090	Clamp	2
36	CSL-51610917	Pipe	1
37	CSL-8161091500	Water Level Pipe	1
38	CSL-4011100901	Inlet Rubber Pipe	3
39	CSL-31901088	Clamp	8

*Machines fitted with extra inlet option contain additional piping and water valve. (29)

DRAIN ASSEMBLY

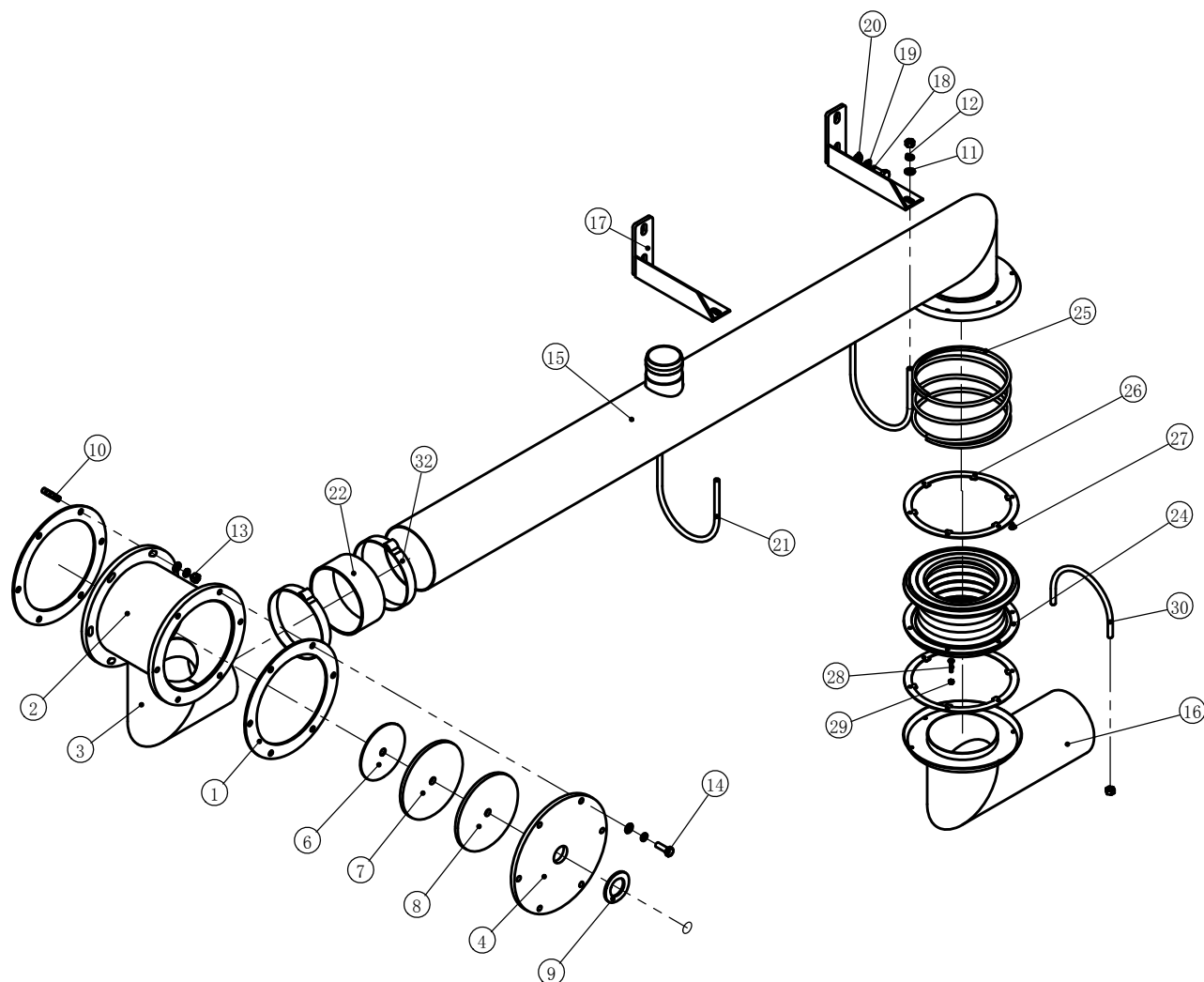


Figure	Part No.	Description	Qty
1	CSL-4011521101	Gasket	4
2	CSL-510090600	Drain Body	2
3	CSL-510070058	Drain Pipe	2
4	CSL-510070056	Cover	2
6	CSL-81521106	Clamp Plate	2
7	CSL-4011521105	Gasket	2
8	CSL-510070057	Support	2
9	CSL-81521108	Gasket	2
10	CSL-30340058	Screw M8X25	7
11	CSL-30304006	Washer 8	19
12	CSL-30305005	Lock Washer 8	19
13	CSL-30303005	Nut M8	16
14	CSL-30302055	Screw M8X25	7
15	CSL-8161110100	Drain Pipe	2
16	CSL-8161110400	Lower Drain	2

DRAIN ASSEMBLY - CONTINUED

Figure	Part No.	Description	Qty
17	CSL-81611106	Bracket	2
18	CSL-30302068	Screw M10X20	5
19	CSL-30305006	Lock Washer 10	5
20	CSL-30304007	Washer 10	5
21	CSL-4601710607	U-Bolt	3
22	CSL-4011710609	Adaptor	2
24	CSL-4011710603	Ripple Pipe	2
25	CSL-4021710605	Spring	2
26	CSL-81710604	Clamp Ring	4
27	CSL-30320020	Bolt	7
28	CSL-30309077	Bolt M4X20	7
29	CSL-30303002	Nut M4	7
30	CSL-4601710602	U-Bolt	2
32	CSL-31901092	Clamp	4

*Machines fitted with extra drain option contain additional set of above parts listing.

SUPPLY ASSEMBLY

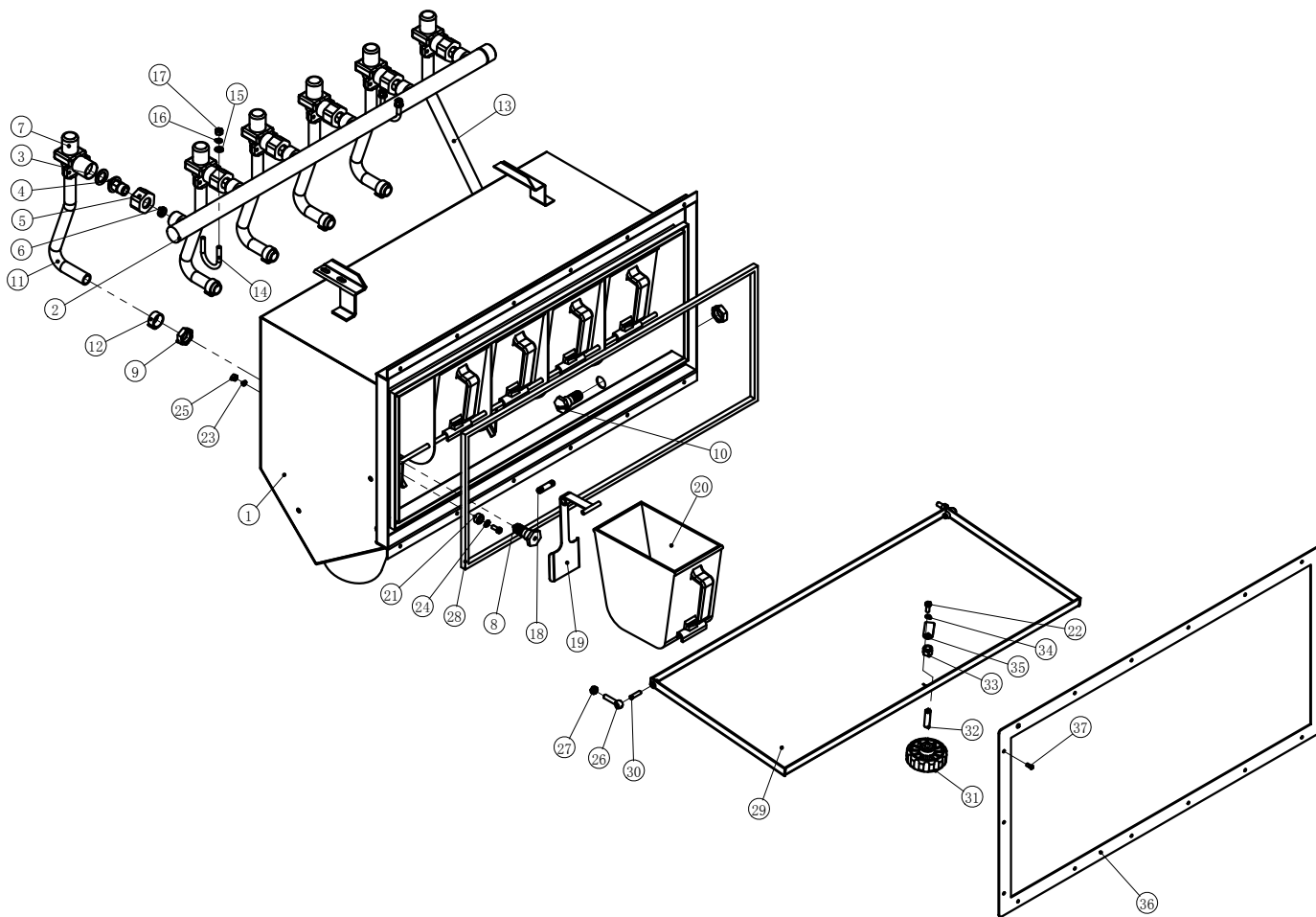


Figure	Part No.	Description	Qty
1	CSL-8161080500	Box	1
2	CSL-51610808	Pipe	1
3	CSL-40110070016	Gasket	6
4	CSL-510070015	Tie-In	6
5	CSL-510070017	Nut	6
6	CSL-40110070014	Gasket	6
7	CSL-30903041	Valve	6
8	CSL-510070025	Tie-In	5
9	CSL-40310070077	Nut M16	6
10	CSL-510070029	Tie-In	1
11	CSL-31716002	Hose	5
12	CSL-31901081	Clamp	12
13	CSL-31716002	Hose	1
14	CSL-46010070024	U-Screw	2
15	CSL-30304005	Washer 6	4
16	CSL-30305004	Lock Washer 6	4
17	CSL-30303004	Nut M6	4
18	CSL-510070021	Axis	5

SUPPLY ASSEMBLY - CONTINUED

Figure	Part No.	Description	Qty
19	CSL-8161080300	Water Guide	5
20	CSL-4031610806	Cup	5
21	CSL-40110070026	Rubber Gasket	5
22	CSL-30405021	Bolt M5	6
23	CSL-30520020	Lock Washer 5	5
24	CSL-30404001	Washer 5	5
25	CSL-30402003	Nut M5	5
26	CSL-510070007	Bolt	2
27	CSL-30509003	Nut M6	4
28	CSL-4011300602	Gasket	1
29	CSL-81610809	Door	1
30	CSL-510070008	Bolt	2
31	CSL-810090300	Handle	1
32	CSL-510070005	Bolt	1
33	CSL-30510201	Lock Nut	1
34	CSL-30305003	Lock Washer 5	1
35	CSL-810070012	Bolt	1
36	CSL-81610810	Decorated Board	1
37	CSL-30344011	Rivet 4X10	18

DOOR ASSEMBLY

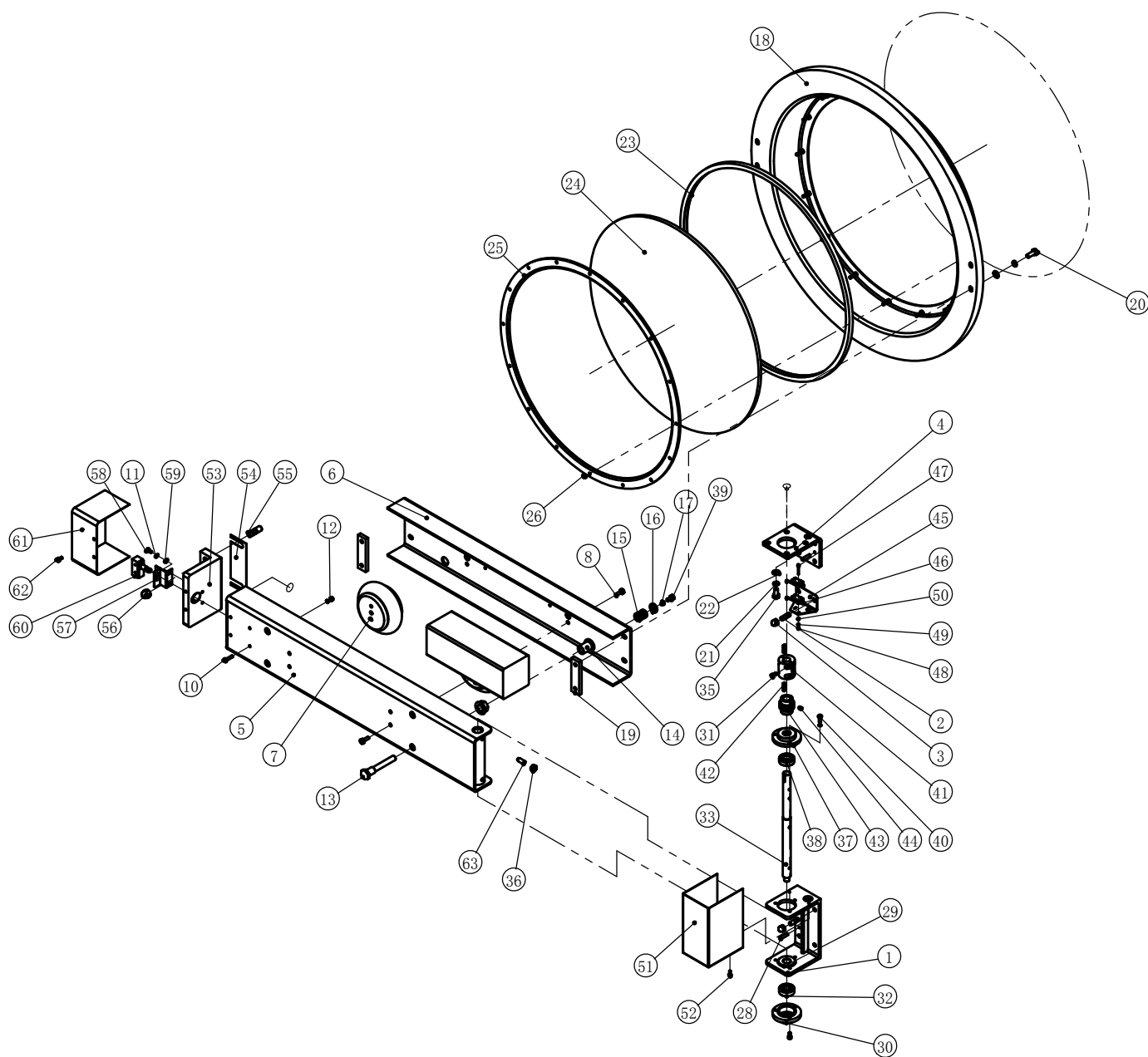


Figure	Part No.	Description	Qty
1	CSL-51610612	Bracket	1
2	CSL-30340009	Bolt M10X20	8
3	CSL-30519003	Head Nut M10	8
4	CSL-81610615	Bracket	1
5	CSL-81610617	Door Channel, Front	1
6	CSL-8161061000	Door Channel, Rear	1
7	CSL-30908002	Air Spring	2
8	CSL-30502023	Screw M8X20	8
10	CSL-30502016	Screw M6X25	4

DOOR ASSEMBLY - CONTINUED

Figure	Part No.	Description	Qty
11	CSL-30305004	Lock Washer 6	9
12	CSL-30303004	Nut M6	4
13	CSL-51710118	Screw	4
14	CSL-51610609	Bushing	4
15	CSL-4021710120	Spring	4
16	CSL-510070061	Washer	4
17	CSL-30305005	Lock Washer 8	4
18	CSL-8161060100	Door	1
19	CSL-51610607	Bracket	2
20	CSL-30502031	Stainless Screw M10X25	4
21	CSL-30305006	Lock Washer 10	8
22	CSL-30304007	Washer 10	8
23	CSL-4011610603	Door Glass Gasket	1
24	CSL-31401016	Door Glass	1
25	CSL-51610611	Glass Pressure Ring	1
26	CSL-30307053	Head Nut M6	16
28	CSL-30324030	Pin	4
29	CSL-8171000103	Washer	1
30	CSL-510070062	Bearing Housing	1
31	CSL-30312036	Bolt M6X12	7
32	CSL-30205002	Bearing	1
33	CSL-51610613	Door Pivot Pin	1
34	CSL-30901015	Cylinder	1
35	CSL-30302068	Screw M10X20	4
36	CSL-30303006	Nut M10	1
37	CSL-510070063	Bearing Housing	1
38	CSL-30201003	Bearing	1
39	CSL-30302051	Screw M8X16	4
40	CSL-30302033	Screw M6X16	3
41	CSL-51710132	Spacer	1
42	CSL-30339011	Flat Key	2
43	CSL-51510619	Cam	2
44	CSL-30316016	Bolt M8X10	2
45	CSL-81610618	Bracket	1
46	CSL-31202020	Switch	2
47	CSL-30309058	Bolt M3X30	2
48	CSL-30303001	Nut M3	2
49	CSL-30305001	Lock Washer 3	2
50	CSL-30304002	Washer 3	2
51	CSL-81610616	Cover	1
52	CSL-30302016	Screw M5X10	2
53	CSL-8161060500	Bracket	1
54	CSL-81610606	Gasket	2
55	CSL-30340019	Bolt M14X30	2

DOOR ASSEMBLY - CONTINUED

Figure	Part No.	Description	Qty
56	CSL-30307057	Head Nut M14	2
57	CSL-81510604	Bracket	1
58	CSL-30302031	Screw M6X12	2
59	CSL-30304005	Washer 6	2
60	CSL-31202004	Switch	1
61	CSL-8161060200	Cover	1
62	CSL-30502010	Screw M6X12	2
63	CSL-30316013	Bolt M10X25	1

BRAKE ASSEMBLY

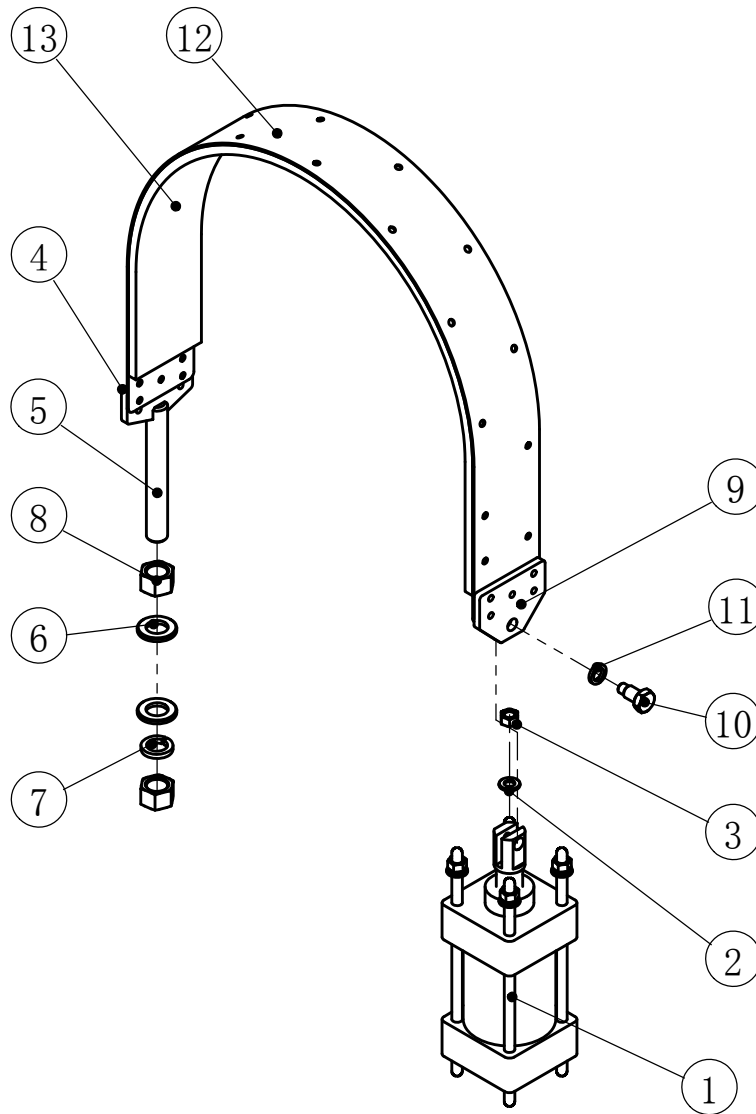


Figure	Part No.	Description	Qty
1	CSL-30901005	Brake Cylinder	1
2	CSL-30304006	Washer 8	4
3	CSL-30303005	Nut M8	4
4	CSL-81500709	Screw Bracket	1
5	CSL-510070042	Screw	1
6	CSL-30304010	Washer 16	2
7	CSL-30305009	Lock Washer 16	1
8	CSL-30303009	Nut M16	2
9	CSL-81500704	Tension Bracket	1
10	CSL-510070041	Screw	1
11	CSL-30305006	Lock Washer 10	1
12	CSL-81610502	Brake Strap	1
13	CSL-4041610501	Brake Strip	1

DYNOZONE ASSEMBLY

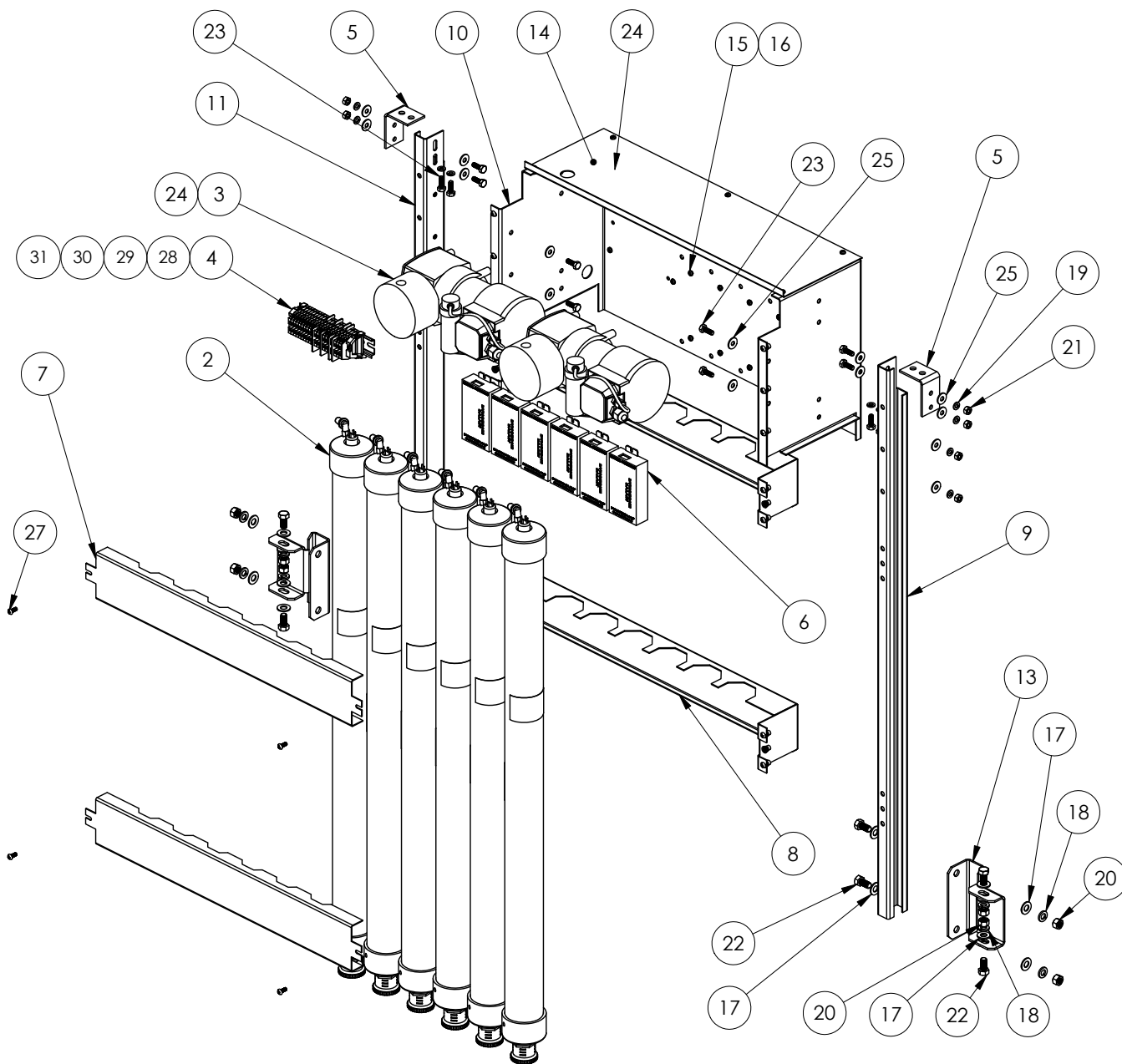
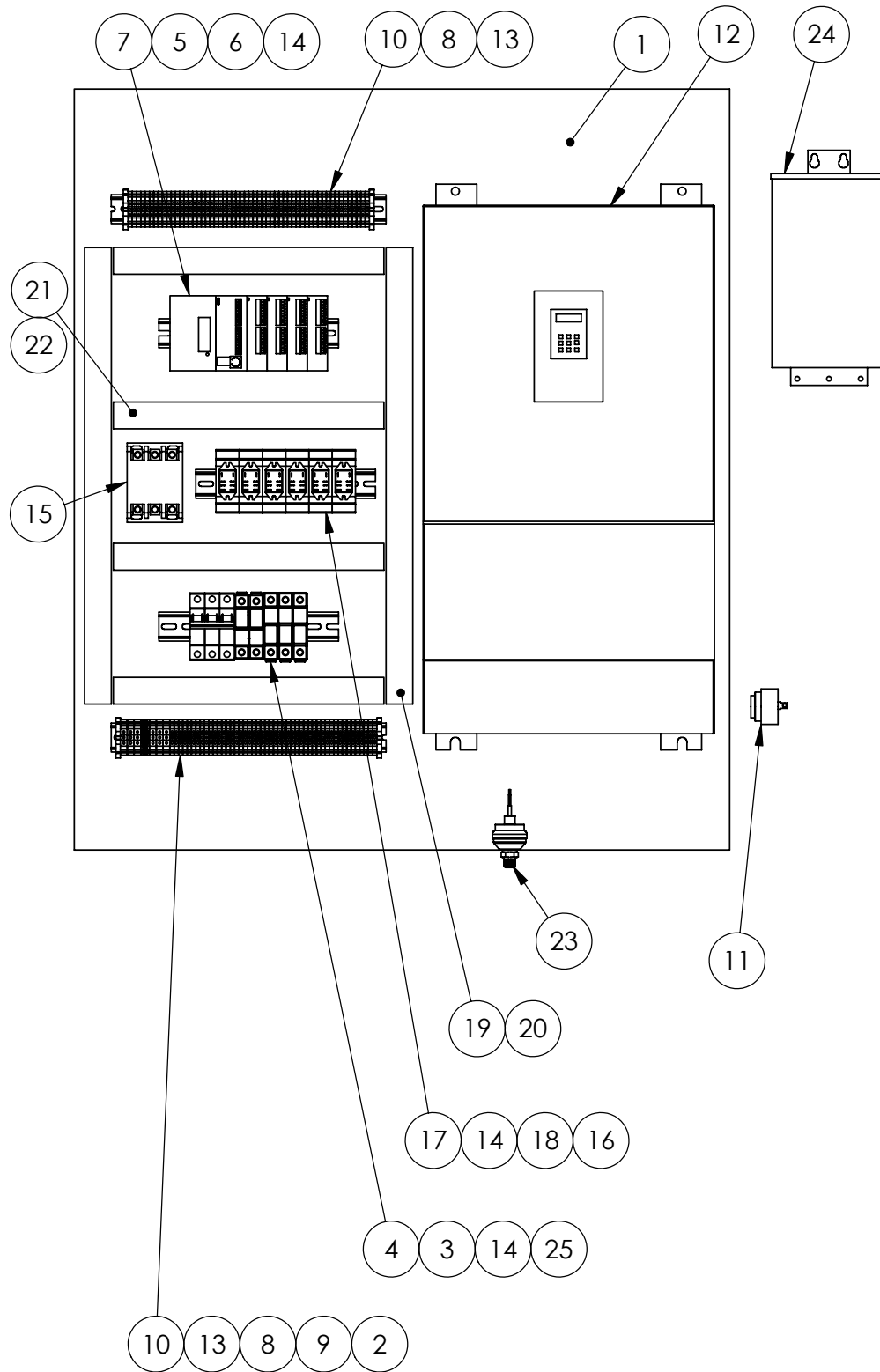


Figure	Part No.	Description	Qty
2	3720-2	Power Cell, 36"	6
3	3710-10	Pump, Ozone, High Vov.	2
4	6999	Din Rail	.53 ft
5	3782-4-CSL60	Bracket, Channel Mounting	2
6	3705-1	Ballast	6
7	3782-5-CSL350	Bracket, Tube Retaining	2
8	3782-2-CSL350	Bracket, Tube Mounting	2
9	3782-3-CSL350	Channel	1
10	3782-1-CSL350	Chassis, Component Mtg	1

DYNOZONE ASSEMBLY - CONTINUED

Figure	Part No.	Description	Qty
11	3782-4-CSL350	Channel	1
12	9833	Nut, #8-32, U-Type Tinnerman Style	5
13	3782-6-CSL350	Bracket, Channel Mounting	2
14	3782-7-CSL350	Cover	1
15	9585	Pan Head Screw (Slot Head) X .375 lg	19
16	9536	Nut Hex Kep #8-32, Zinc Plate	14
17	9572	Washer Flat 3/8 SS	16
18	9558	Washer Lock 3/8 SS	8
19	9556	Washer Lock 1/4 Stainless	20
20	9541	Nut Hex 3/8-16 SS	8
21	9539	Nut Hex 1/4-20 SS	8
22	9513-1	HBolt 0.3750-16x0.75x0.75-S	8
23	9507	Bolt Hex 1/4-20 x 3/4 SS	12
24	9504	Bolt Hex 1/4-20 x 1/2 SS	8
25	9571	Washer Flat 1/4 SS	16
26	ES6475	Rivet Nut, 10-32	18
27	9698	Screw, #10-32 x 1/2 Taptite	18
28	6361-3	Terminal Block, Single Level Feed Thru	18
29	6361-4	Terminal Block End Cover	1
30	6363	Terminal Block Partition Plate	4
31	6364-1	Terminal Block End Stop	2
--	3171	Fitting, Straight, 1/8 Male NPT, 3/8 ID Hose	4
--	3172-1	Fitting, Hose, 90° x 1/4 NPT x 3/8 ID Hose	3
--	3177	"T" Fitting, 3/8 Hose PVDF	4
--	3193	Adaptor 3/8 Hose x 1/4 NPT BRSS	1
--	6987-1	Tubing, Tygon 3/8 ID x 9/16 OD	26 FT

ELECTRICAL PANEL



ELECTRICAL PANEL - CONTINUED

Figure	Part No.	Description	Qty
1	CSL 350	CSL Machine Mounting Surface	1
2	6361-8	Terminal Block, Universal Ground	2
3	6385	Block Safety Fuse (2 Pole - 600 Volt)	1
4	6385-2	Block Safety Fuse (2 Pole - 600 Volt)	3
5	6537-17	PLC, DynaTrol (ELC-PC)	1
6	6537-3	I-O Module	4
7	6537-13	Power Supply	1
8	6364-1	Terminal Block End Stop	4
9	6361-7	Terminal Blocks, Single Level Feed-Through	6
10	6361-5	Terminal Blocks, Single Level Feed-Through	104
11	6098	Buzzer, Audio (95 DB) 24VDC	1
12	CSL-0250	Inverter CSL350	1
13	6999	Rail Extruded Mounting (13.00")	2
14	6999	Rail Extruded Mounting (8.50")	3
15	6827-4	Contactora, 75A, 240 Coil	1
16	6266	Relay Miniature DPDT 24 V/AC	2
17	6266-1	Relay Socket, 2 Pole	6
18	6266-16X	Relay Miniature DPDT 220 V/AC	4
19	6435-1	Cover Wire Trough (21.60")	2
20	6435	Wire Trough (21.60")	2
21	6435-1	Cover Wire Trough (12.80")	4
22	6435	Wire Trough (12.80")	4
23	6537-8	Pressure Sensor, Water Level	1
24	6685-6	Transformer, 440/416/400/380 1KVA	1
25	CSL-0283	Breaker, 63A, 3 Phase	1
--	6537-TS10	HMi Display (10")	1
--	6537-31	Cable, HMi Power	1
--	6537-32	Cable, Communication	1
--	CSL-0227	EStop	4
--	6286	On/Off Rocker Switch	1
--	CSL-0104	Tower Light	1

