

SPECIFICATIONS

Basket Load Capacity	80 Lbs Dry Weight (For a Maximum Moisture Retention of 100%)
Basket Motor	1 H.P.
Fan Motor	1 H.P.
Floor Space	79 High x 40 Wide x 54 Deep
Exhaust Duct.....	10" diameter
Rated Air Displacement	1500cfm maximum at 0.03" W.C.

STEAM HEATED

Operating Steam Pressure	125 lbs. max. (45.36kg)
Boiler H.P.....	7.5 (with normal load)
Steam Consumption	251 lbs. of condensate per hr.
Steam Supply Line	3/4"
Steam Return Line	1/2"
Electrical Connection	440/60/3 (3.5 Amps)
Net Weight (approx.)	920 lbs.
Gross Weight (approx.).....	940 lbs.
Export Shipping Dimensions	88" X 43 1/4" X 60"

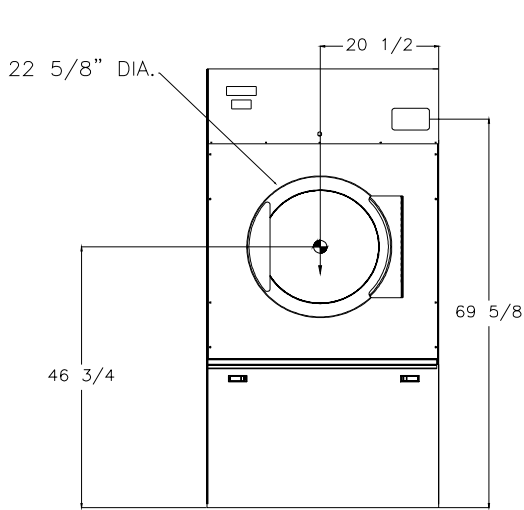
ELECTRIC HEATED

Heat Input	48kw
Electrical Connection	440/60/3 (67Amps)
Net Weight (approx.)	900 lbs.
Gross Weight (approx.).....	920 lbs.
Export Shipping Dimensions	88" X 43 1/4" X 60"

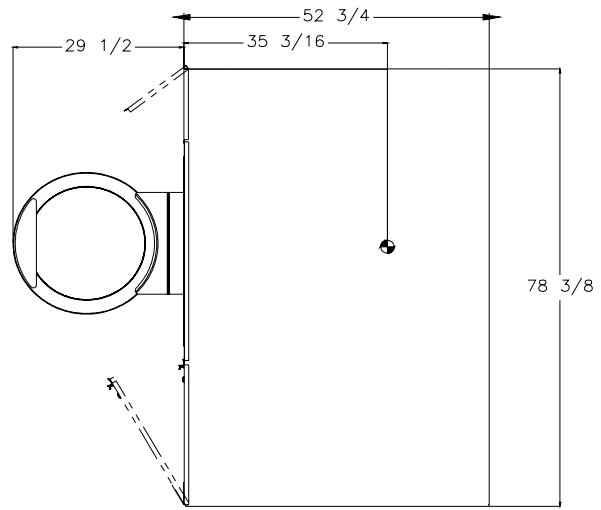
GENERAL DIMENSIONS

ALL DIMENSIONS

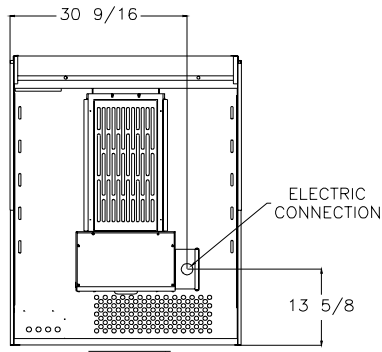
+/- 1/4" (+/- 6.4mm) AND ARE SUBJECT TO CHANGE WITHOUT NOTICE



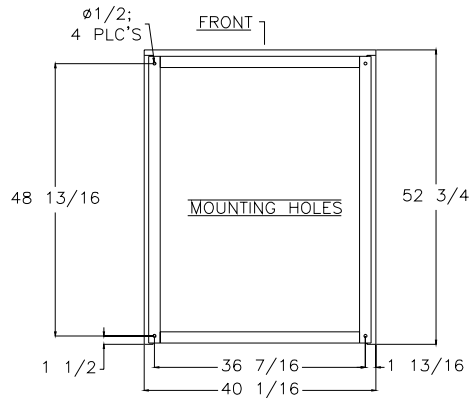
FRONT VIEW



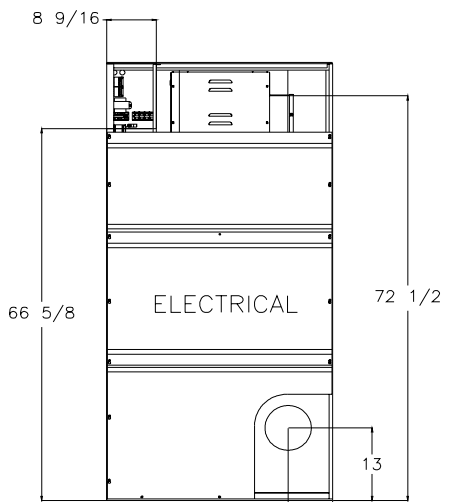
RIGHT SIDE VIEW



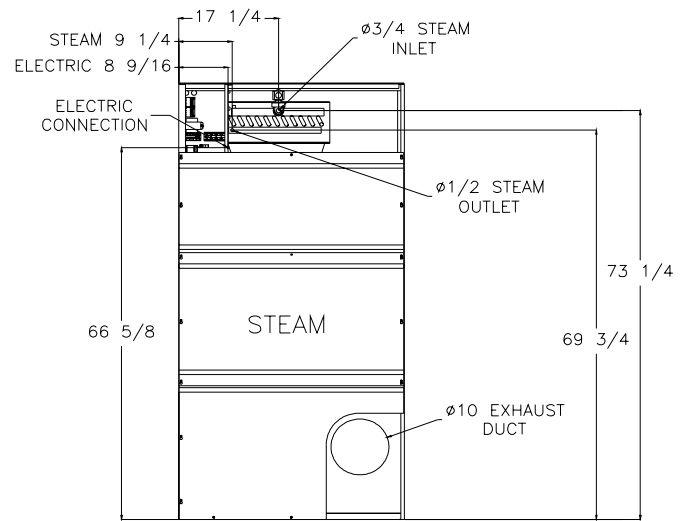
TOP VIEW
(SHOWN WITHOUT TOP COVER)



BOTTOM VIEW



REAR VIEW



REAR VIEW