

## SPECIFICATIONS

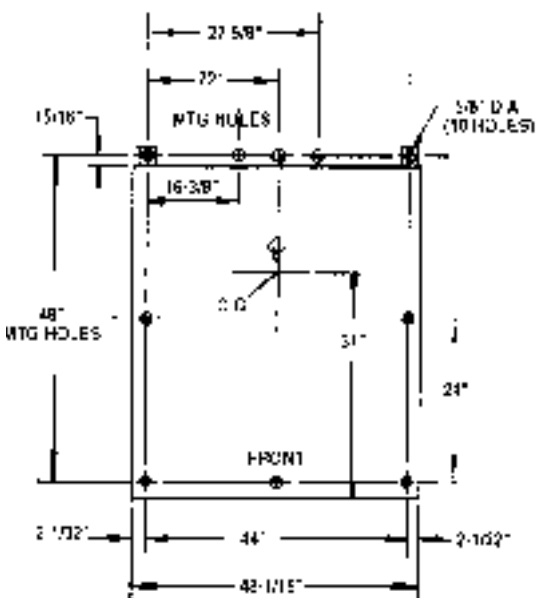
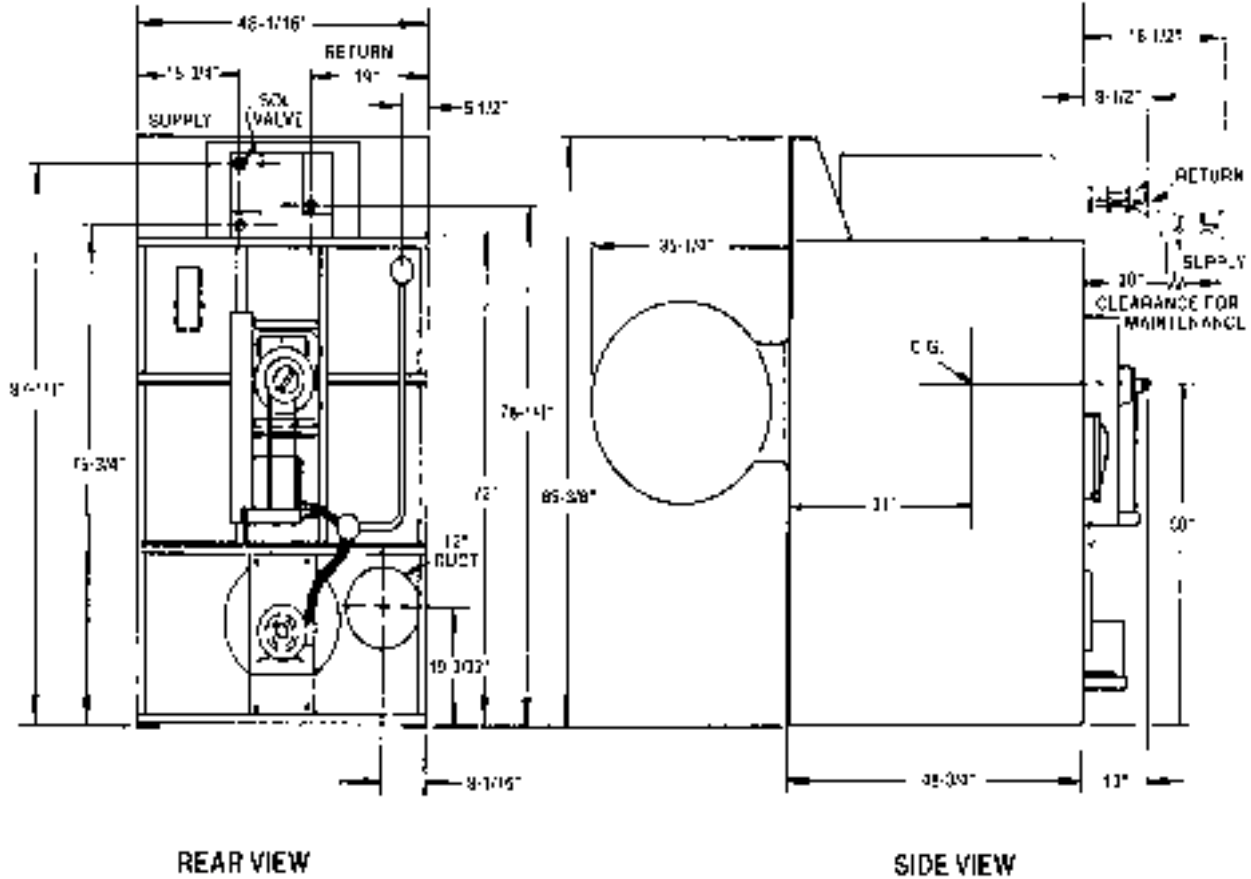
### For 110-pound Steam-Heated Laundry Dryers

Floor Space .....	64" Deep x 49" Wide x 89-3/8" High
Door .....	33-3/8" Diameter
Basket .....	44" Dia. x 42" Deep
Basket Capacity (Dry Weight) .....	Approx. 110 pounds
Basket Motor .....	1 H.P.
Fan Motor .....	1-1/2 H.P.
Basket R.P.M.: Reversing .....	2.8 - 3.2 reversals per minute
Exhaust Duct .....	12" Dia.
Max. Air Displacement .....	2160 cu. ft. per min.
Recommended Operating Range .....	1700 - 2000 cfm
Net Weight (Approx.) .....	1490 lbs.
Domestic Shipping Weight, .....	1985 lbs.
1 crate (Approx.)	
Export Shipping Weight, .....	2200 lbs.
1 box (Approx.)	
Export Shipping Dimensions .....	97" L x 53" W x 78" H
Export Crating .....	232.7 cu. ft.
Operating Steam Pressure .....	125 p.s.i. max.
Boiler H.P. (w/normal load) .....	8.3
Heat Capacity .....	4-Coil
Steam Coils .....	(2) 40-1/2" L x 6" W x 10-1/4" H
Traps for Steam-Heating Coils .....	(2) 3/4"
Steam Supply Line .....	1"
Steam Return Line .....	1"
Electrical Specifications .....	440/60/3 with 24/60/1 Control Circuit

## GENERAL DIMENSIONS

ALL DIMENSIONS

+/- 1/4" (+/- 6.4mm) AND ARE SUBJECT TO CHANGE WITHOUT NOTICE



<b>STEAM SUPPLY (screwed connection)</b>	<b>1"</b>
<b>STEAM RETURN (screwed connection)</b>	<b>1"</b>
<b>NET WEIGHT</b>	<b>1490 lbs.</b>
<b>ELECTRICAL</b>	<b>440, 60 cy. 3 ph.</b>
<b>AMPS</b>	<b>5</b>
<b>BOILER H.P.</b>	<b>8.3</b>